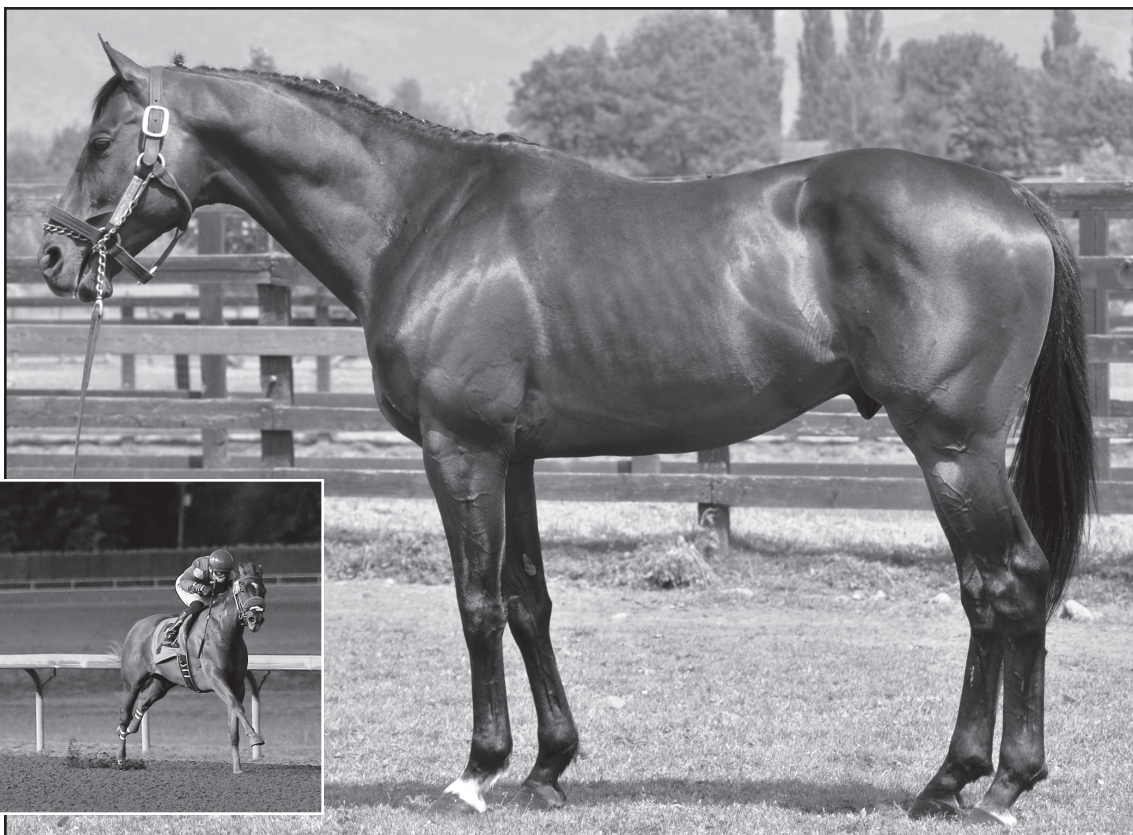


Huya (\$59,903), shown winning an allowance optional claiming \$40,000 by 8 lengths at Emerald Downs in 2016.



Nina Hagen

HOUSEOFROYALHEARTS

Chester House—Royal Herat, by Herat

Versatile Stakes Winner by CHESTER HOUSE

HOUSEOFROYALHEARTS is the sire of **70% winners** from starters with average earnings per starter of **\$24,310**, including:

- 2016 Emerald Downs SP **Westley** (\$60,266), leading money earner among 5YO males from all Washington sires at the 2016 Emerald Downs meet.
- 2016 3YO multiple Emerald Downs allowance winner Huya (\$59,903), leading money earner among 3YO males from all Washington sires at the 2016 Emerald Downs meet and 4th leading 3YO male overall behind Barkley, The Press and Mach One Rules. Togrammashousewego was 2nd leading 3YO male at Emerald from Washington sires.
- 7-race winner and \$60,527 earner Whiskeyonthehouse.

HOUSEOFROYALHEARTS is the LAST son of **G1 SW** and “genetic masterpiece” **CHESTER HOUSE** standing in North America. **CHESTER HOUSE** has **15.8% SWs (29)**, **74.9% winners** and **25.7% 2YO winners** from starters.

Among **CHESTER HOUSE**'s **9 graded/group winners** and **2 Breeders' Cup champions** is **G1 winner DIVINE PARK** – sire of the gallant **LADY ELI**, who after being a **G1** winner at 2 and 3, came back this fall after foundering to win the Flower Bowl H.-**G1** and finish second by a nose in the \$2-million Breeders' Cup Filly and Mare-**G1** (7-2-0 from 9 starts, \$2,169,800).

Half-brother to 13 other winners, including SWs **CHITKA** and **ROYAL RECRUIT**, SP **Royal Affirmed**, **Fu Peg He Rat**, **Heartbuster** and **Royal Grand Slam** and multiple stakes producer Royal Woodman.

Immediate female family of champions **LANDALUCE**, **THEATRICAL (Ire)**, **PARADISE CREEK**, **GO VIVIAN GO**, ***PRINCE ROYAL II**, **G1 SWs STARTAC** and **HARMONIOUS**, and **G1 SW** and 2-time leading sire **WILD EVENT**.

2017 Fee: \$500 Live Foal • NO BOOKING FEE

MAGNUM FARMS

Inquiries to Tim Peterson (253) 209-7423 • 42624 - 188th Ave. SE, Enumclaw, WA 98022

Inquiries also to Don MacKenzie, syndicate manager (425) 830-9005

